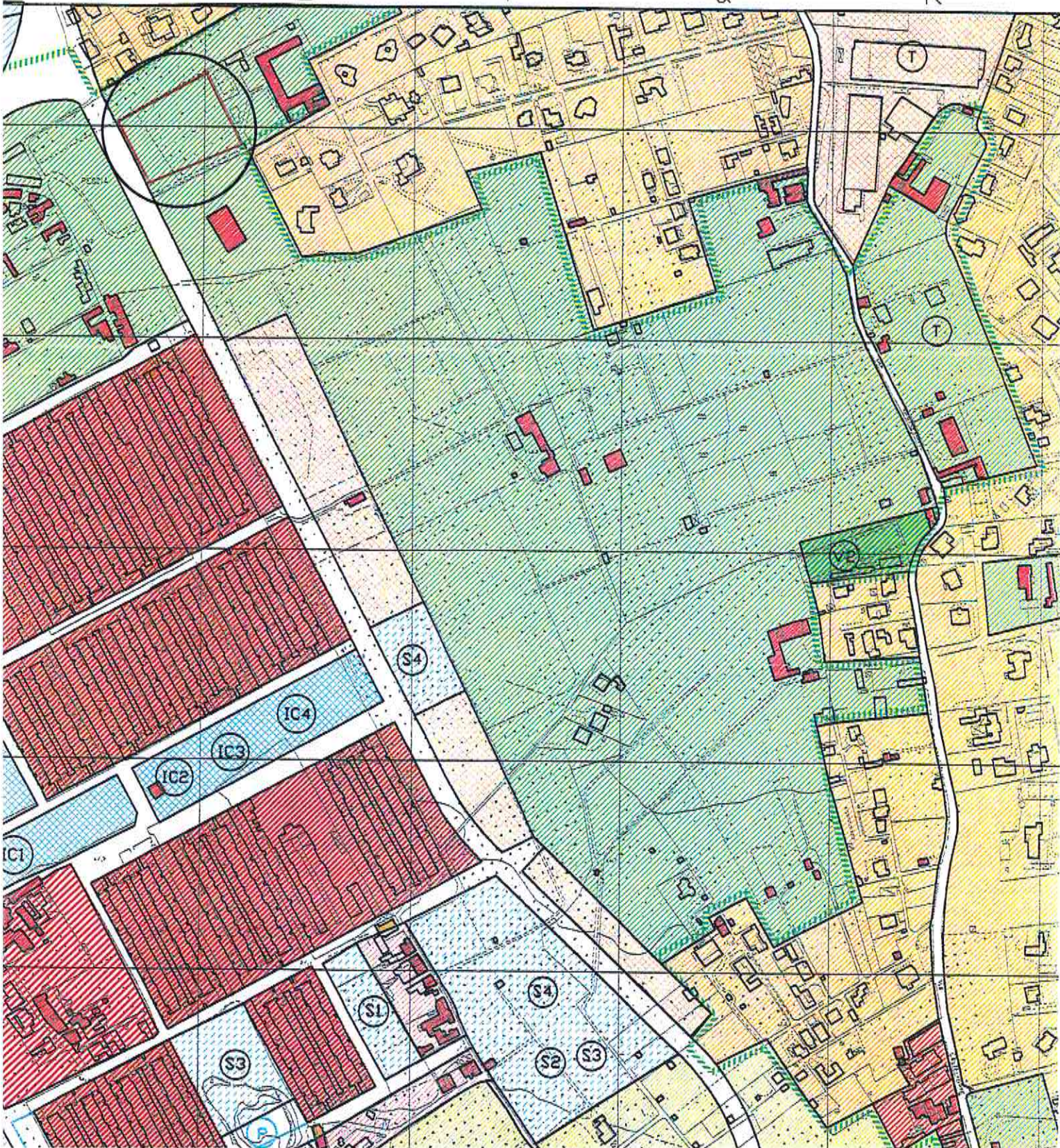



N O P Q R



VARIANTE GENERALE AL PRG ADOTTATA CON D.C.C. N°45/97

Scala 1/5000

 Zona "Verde Storico" - "A1"-
(P.lle 345, 507, 599)

Copia Conforme

Esperto/Geometra
Arch. Rosario Favitta



06 LUG 2020

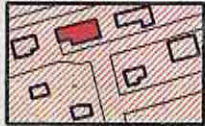
LEGENDA



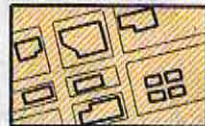
A₁



A₂



B₀



B₁



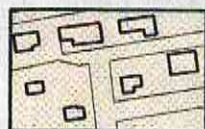
B₂



B₃



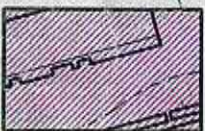
B₄



B₅



C



D₁



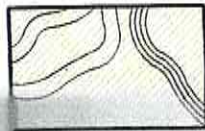
D₂



E₁



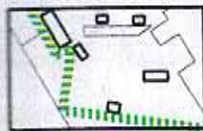
E₂



Fascia costiera



Verde Storico



Parchi Urbani



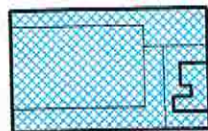
S

S₁ Asilo Nido

S₂ Scuola Materna

S₃ Scuola Elementare

S₄ Scuola Media



IC

IC₁ Chiese e Centri Religiosi

IC₂ Edifici per il tempo libero

IC₃ Edifici per la pubblica amministrazione

IC₄ Centri culturali

IC₅ Centri sociali e sanitari